

AuJet HC2000

High Resolution Ink-Jet Printer

▶▶ Applicable products

communication products, drink lids, food package bags, medicine package plastic steel doors and windows, aluminum alloy, battery, plastic pipes, PCB, chip, brake, housing for mobile phone, engine, transformer, inner plate for water meter, gypsum board etc.

● Multi-function

● Easy Operation

● No Solvent

● Economical



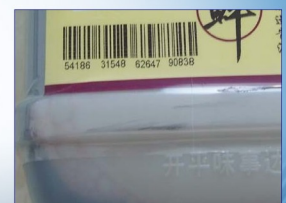
Transformer



Electromechanical products



Metal



Bar code



Energy-saving bulb

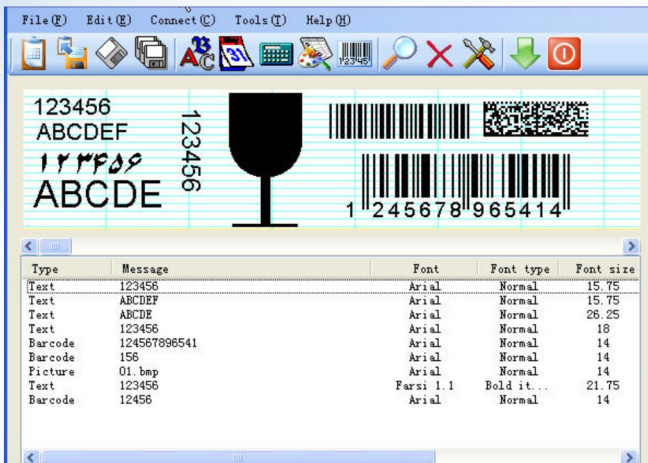


AuJet HC2000 is a REAL drop on demand ink-jet printer (DOD Type) with superior resolution and cleaner ways of printing. No need to use gas source or dilution. No noise, no irritating odor, no pollution to the environment. And the print speed isn't influenced when adding lines. It can print either big or small characters. One printer can perform Two functions! With its stable performance and easy maintenance, along with its user friendly operating interface and beautiful design, you will find the operation is as simple as a piece of cake!

❖ Feature

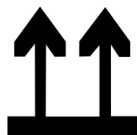
1. Operation and Control System comes with HC2000, stable, independently. Enhanced anti-jamming device
2. Multilingual options, Select interface languages can be tailored according to customer requirements as set
3. Can print more than 20 kinds of text, edit information can rotate 90 degrees
4. Own printing character, but also according to customer requirements with the need to add fonts
5. Freely transferred to other applications and print design with a bitmap (BMP) or JPEG file format pattern
6. Real-time Print the current time, production date, and the product serial number (serial number) of the Code Print (Increase / reduction control, any jump step number) and other features;
7. Can print a variety of standard bar code
8. Open communications protocol, can be connected to a database (EXCEL, ACCESS), and to support ActiveX, you can print random code (garbled or security code) and the security bar codes, etc.
9. HC2000 operation control system can precisely adjust the print position to meet the production line to print the location of different product requirements; user friendly design, the status indicator light to show real-time printing status
10. The control system, not only has a very powerful printing functions, and learn to understand

❖ Information editing



❖ Printing sample of ink-jetprinting

Production dates: 07/02/18
 Best use: 09/02/18
 Water numbers: 20070218



123ABCD

❖ Technical Data

1. System : Kadex operation control system, free graphical text editor, WYSIWYG
2. Software function: Can easily edit symbols, texts, numbers and barcode, the specially function is whatever you preview is, whatever is printed exactly.
3. Display: all printing parameters are display on screen, clear information!
4. Printing Resolution DPI: 200 DPI
5. Status display: Red light (Sensor is working); Yellow light (Encoder is working). Green light (Printing is working); White light (Computer connection is working)
6. Printing fonts: High-definition printing any font, can also printing dot matrix font. (imitation dot matrix font)
7. Printing symbols: It can print various trademarks, logos, Chinese or foreign languages fonts, numbers, characters and special signs.
8. Lines of printing: can edit the quantity of lines within the valid height (18mm).
9. Printing UPC: IITF/CODE39/JAN/EAN128/QR/Code 2D /Code 1D
10. Height of Character: Can choose the character height within print height range 1mm ~ 18mm
11. Width of Spray Head: 18mm
12. Best printing Distance: The distance between the spray head and printing objects should be 5-10mm
13. Printing Direction: The spray head can be adjusted 0-180° vertical downward or vertical upward, from left to right horizontally
14. Automatic Printing: Date, time, lot No, Shift No, Sequence No etc.
15. Message Memory: Limitless memory space for messages
16. Text Length: Max. 1000 characters.
17. Sequence No: 1-8 variable numbers
18. Printing Speed: Maximum 35 meters /minute and the speed isn't influenced when printing more lines.
19. Colors of Ink Cartridges: Black, Red, Blue, White
20. Printing Direction: Forward, reverse, vertical downward or vertical upward.
21. Printing material: Metal, plastic, wood, aluminum film, carton or building material surface etc.
22. Applicable products: Display screen of mobile phone, drink lids, food package bags, medicine package, steel-plastic door & window, aluminum alloy, battery, plastic tube, steel plate, PCB, chip, woven bag, egg, brake, housing for mobile phone, carton etc.
23. Ink Cartridge: Solvent based environmentally friendly ink cartridge or oil based ink cartridge. No need to use external gas source or dilution.
24. Main Interface: USB, encoder, sensor
25. Packing Size: 66x43x 31cm
26. Auto voltage selection: AC110- 220V
27. Energy Consumption: Average lower than 100W
28. Weight of printer: 15 KGS
29. Operation Temperature: 1°C-37°C; Humidity 30% -70%

➤ **Remark:**
 The manufacturer reserves its right to update the parameters and enhance product performance without prior notice.

Dealer